

AT A GLANCE

LIPHATECH[®]

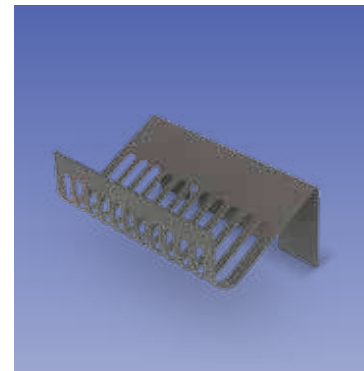
TARGET
SPECIALTY PRODUCTS™

Empowering You to
Grow Your Business™



Liphatech Products At A Glance

Featuring our comprehensive line of rodenticides,
bait stations and SoftSecure™ Technology.



BAITS AT A GLANCE

FirstStrike®

- Active ingredient: difethialone (25 ppm)
- Use for the toughest rodent control challenges
- Maintains integrity in hot environments
- Formula is palatable to rats and mice

Soft Bait (10g pouches)

- 726 pouches per 16 lb. pail
- 363 pouches per 8 lb. pail (case of 2)
- 182 pouches per 4 lb. bag (case of 4)

Soft Bait (40g pouches)

- 182 pouches per 16 lb. pail

**FIRST
STRIKE**



Resolv®

- Active ingredient: bromadiolone (50 ppm)
- Good choice for budget-minded accounts
- Maintains integrity in hot environments
- Formula is palatable to rats and mice

Soft Bait (12g pouches)

- 604 pouches per 16 lb. pail
- 151 pouches per 4 lb. bag (case of 4)

Soft Bait (40g pouches)

- 182 pouches per 16 lb. pail

RESOLV



TakeDown® II

- Active ingredient: bromethalin (100 ppm)
- Faster results than anticoagulant rodenticides
- Maintains integrity in hot environments
- Formula is palatable to rats and mice

Soft Bait (8g pouches)

- 227 pouches per 4 lb. bag (case of 4)

Check Liphatech.com for the latest state registration information.

**TAKE
DOWN II**



Flatline®

- Active ingredient: chlorophacinone (50 ppm)
- The first and only multiple-feed soft bait rodenticide for everyday use
- Maintains integrity in hot environments
- Formula is palatable to rats and mice

Soft Bait (28g pouches)

- 65 pouches per 4 lb. bag (case of 8)

FLATLINE



Generation®

- Active ingredient: difethialone (25 ppm)

Mini Blocks (20g blocks)

- 363 blocks per 16 lb. pail
- 90 blocks per 4 lb. bag (case of 4)

Bulk Pellets

- 20 lb. pail

Pellet Place Packs (25g packs)

- 100 packs per pail (4 pails per case)



BlueMax™

- Active ingredient: difethialone (25 ppm)
- Contains mold inhibitors
- Mini blocks contain paraffin for moisture tolerance
- Blue marker dye can be seen in droppings

Mini Blocks (20g blocks)

- 363 blocks per 16 lb. pail
- Ideal for audited accounts

Bulk Meal

- 18 lb. pail
- Effective as a Norway rat burrow bait



Maki®

- Active ingredient: bromadiolone (50 ppm)

Mini Blocks (1 oz. blocks)

- 256 blocks per 16 lb. pail

Paraffin Blocks (1 lb. blocks)

- 20 blocks per box

Bulk Paraffinized Pellets

- 20 pounds per pail
- Approved for burrow baiting

Pellet Place Packs (1.5 oz. packs)

- 75 packs per pail (case of 4)



NoTox™

- Non-toxic bait
- Good for attracting and monitoring rodents, nuisance animals, and pests

Mini Blocks (20g blocks)

- 227 blocks per 10 lb. pail
- Based on the same formula as Maki® mini blocks

Soft Bait (10g pouches)

- 45 pouches per 1 lb. bag (case of 8)
- Based on the same formula as FirstStrike®



BAIT STATIONS AT A GLANCE

A E G I S[®]

Valuable features

- See-through pathway designed to encourage entry and feeding by rodents
- Long-lasting mechanical hinge (not available on mouse station)
- Locks open fast and easy, all with same key

Aegis[®]-RP Anchor

- Black or gray with an integrated concrete block
- Use with trap or rodenticide
- Two bolts embedded into concrete
- Pre-assembled station eliminates set-up hassle and costs
- Install either horizontally or vertically
- SoftSecure™ Technology (SST) compatible



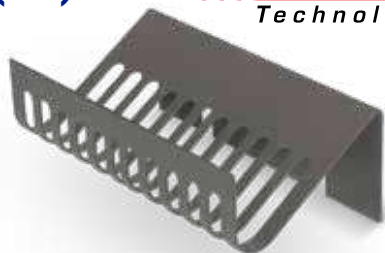
Aegis[®] Mouse

- All black or with clear lid
- Twice the capacity of most stations
- Specifically designed to hold soft bait



SoftSecure™ Technology (SST)

- Rodenticide placement device
- Ideal for soft bait and also works with traditional blocks
- Designed for the Aegis[®]-RP and Aegis[®]-RP Anchor bait stations
- Easy to use: peel off paper, place bait, close lid and go



Soft Secure™
Technology

Aegis[®]-RP

- Black or gray
- Use with trap or rodenticide
- Lid opens away from wall
- Compact size
- Install either horizontally or vertically
- SoftSecure™ Technology (SST) compatible



Aegis[®] Modular

- Black only
- Robust station
- Use with bait, traps or glue boards



Aegis[®] Rat

- All black, all white (Cool Box) or black with clear lid
- Double-tunnel design for improved bait consumption



LIPHA TECH
— GROUPE DE SANGOSSE

Distributed by:



Empowering You to
Grow Your Business™

target-specialty.com
TargetSpecialty
@TargetSpecProd

Target Specialty Products
@targetspecialtyproducts
targetspecialtyproducts